

Ethical Guidelines for
Positive Psychology Practice

PENN State
MAPP Alumni Presentation
May 2022

Aaron Jarden, Tayyab Rashid,
Annalise Roache, Tim Lomas





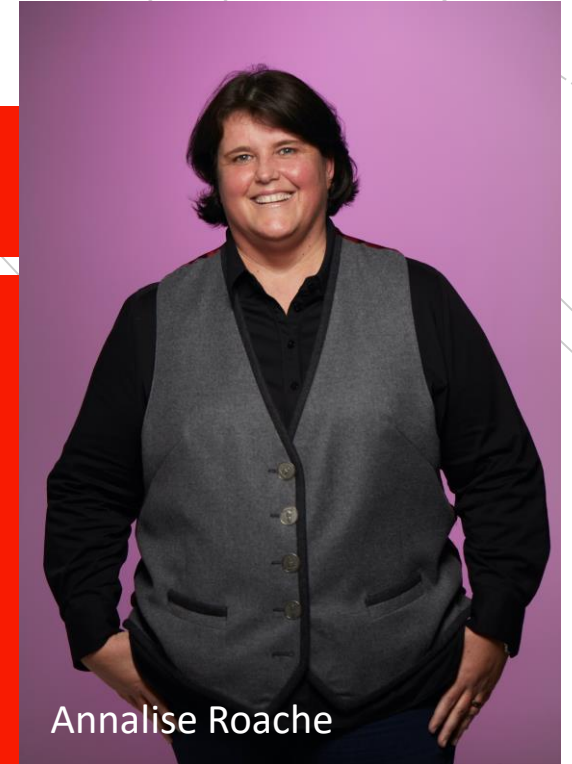
Assoc. Prof. Aaron Jarden



Dr Tayyab Rashid



Dr Tim Lomas



Annalise Roache

These guidelines are the result of a collaborative and independent working group. The guidelines are independent of any organisation or association; however, numerous parties have been involved in the development and refinement of both iterations.

Today's session

- Reflect on how you can use these guidelines to support your practice
- Question and Answer time
- A call to get involved in building the guidelines
- A bit of fun!

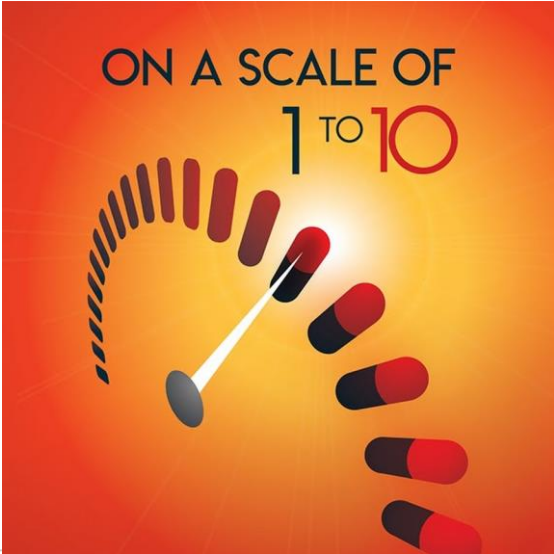


YOU
ARE
HERE

Pulse check

A few opening questions - Are you the right place?

- Have you read the guidelines?
- Have you watched the presentation?
- Be honest – are you already wearing your Pyjamas?



How sexy is ethics?
On a scale of 1 to 10



APPLAUSE

When you hear
the word
Ethics...what
comes to mind?



A red speech bubble graphic with a white outline, containing the text 'Let's get practical'. The bubble has a tail pointing downwards and to the right.

Let's get
practical

- **How can these guidelines be useful in your work?**
- **Breakout session – what are your next steps for bringing these guidelines to life in your practice?**



In the chat box let us know

- What ideas did you come up with for how you can use these guidelines?
- What questions do you have for us?

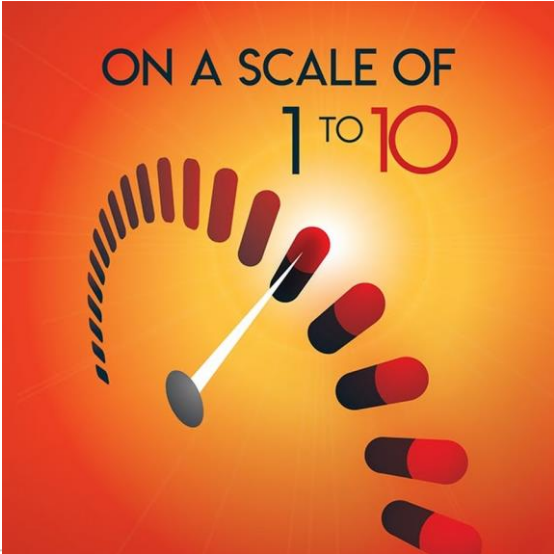
Who can call themselves a Positive psychology practitioner (PPP)?

The guidelines define a Positive psychology practitioner as (PPP);

*A practitioner who has **completed requisite training to practise** (e.g., psychotherapy, counselling, coaching), **and undertaken PP specific training** with a reputable training provider, thereby allowing an **understanding of the scientific research process and its ethical application in the delivery of applied positive psychology** (e.g., PPIs).*

Who can call themselves a PPP?

- Currently no clear demarcation on amount and level of training or qualification needed.
- These questions need resolving within the field, and are **beyond the scope of these guidelines.**
- Guidance regarding appropriate training and supervision needed from the professional bodies in this field.



TIME 2 MEASURE



How sexy is ethics?
On a scale of 1 to 10

Want to get
involved?

Feedback, new content and
translation needed.

QR Code to Survey

Get
involved



Or Email

aaron.jarden@unimelb.edu.au or
ethicalguidelinesppp@gmail.com

APPLAUS€

